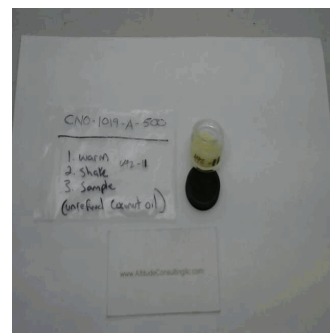




Customer: **HM Health, LLC**
 Customer Sample ID: **CNO-1019-A-500**
 Laboratory Number: **19J0472-11**

Density: **0.929**



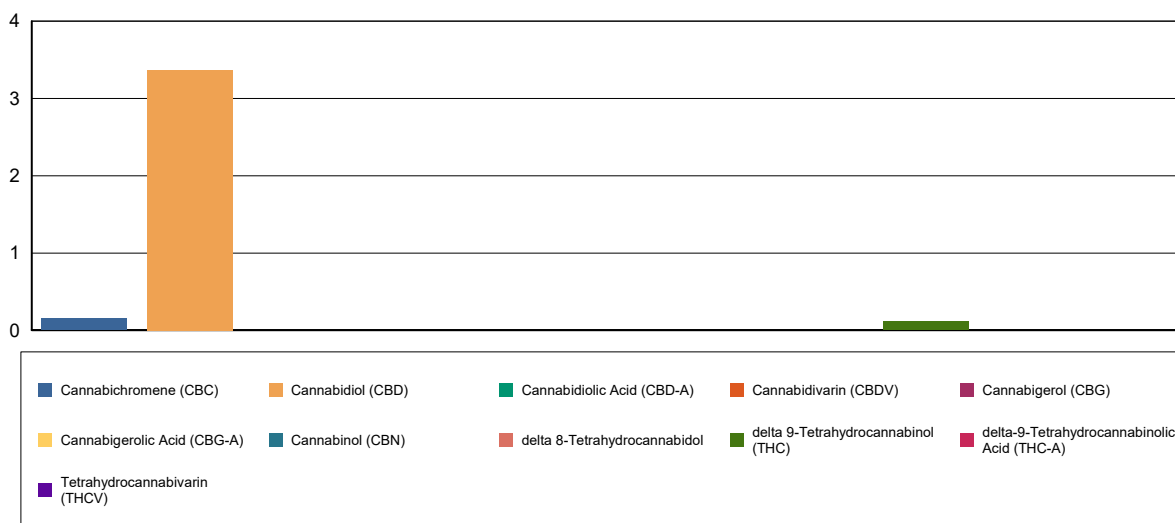
Cannabinoid Profile

Extraction Technician: DF
 Analytical Chemist: CB

Extraction Date(s)	Analysis Date(s)
10/22/2019	9/19/2012

Cannabinoids (HPLC)		Results	
	LOD (mg/g)	%	mg/g
Cannabidiol (CBD)	<0.080	0.34	3.37
delta 9-Tetrahydrocannabinol (THC)	<0.080	0.01	0.115
delta 8-Tetrahydrocannabinol	<0.080		
Cannabichromene (CBC)	<0.080	0.02	0.154
delta-9-Tetrahydrocannabinolic Acid (THC-A)	<0.080		
Cannabidiol (CBD)	<0.080		
Tetrahydrocannabivarin (THCV)	<0.080		
Cannabigerol (CBG)	<0.080		
Cannabigerolic Acid (CBG-A)	<0.080		
Cannabidiolic Acid (CBD-A)	<0.080		
Cannabidivarin (CBDV)	<0.080		
Cannabinoids Total		%	mg/g
Max Active THC		0.01	0.12
Max Active CBD		0.34	3.37
T.Active Cannabinoids		0.36	3.63
Total Cannabinoids		0.36	3.63
Ratios			
29.30:1 CBD to THC		0.03:1 THC to CBD	

Cannabinoid (mg/g)



Altitude Consulting, LLC utilizes NIST traceable Reference Standards and Certified Reference Material to calibrate analytical instruments along with proven analytical methods. The methods are applied in the most ethical manner following good laboratory practice guidelines. The results of this report are based solely on the sample submitted and cannot be reproduced.