

Customer: HM Health, LLC (HempMy Pet)
Address: 750 E. Highway 60
Loveland, CO 80537

Sample ID: (1000mg Hemp Seed Oil - 1oz Bottle) HSO-0722-A-1000
Matrix: Topical
Labnumber: 22G0147-02

Density (g/mL): .9374

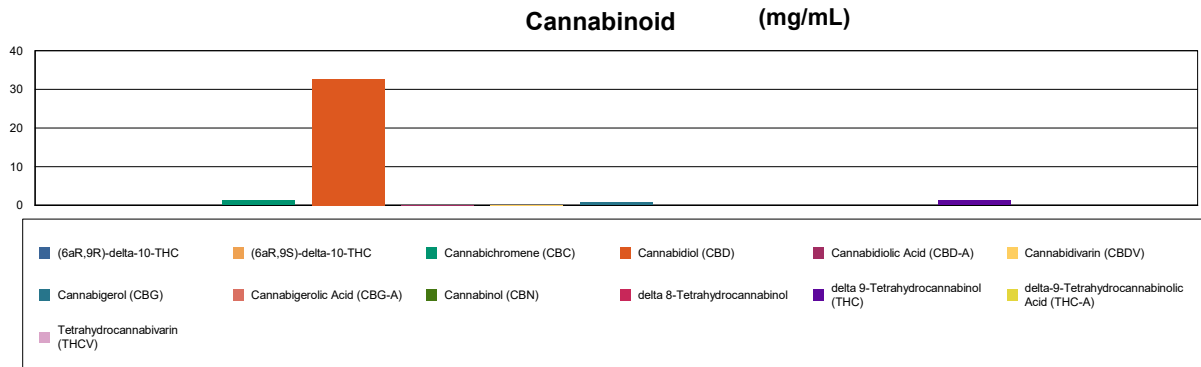
Cannabinoid Profile

Test Conditions: 23°C
Extraction Technician: SH
Analytical Chemist: SH

Extraction Date(s)	Analysis Date(s)
7/20/2022	7/20/2022

Cannabinoids (HPLC)		Results	
	LOD (mg/mL)	%	mg/mL
Cannabidivarin (CBDV)		0.009	0.090
Cannabidiolic Acid (CBD-A)		0.01	0.104
Cannabigerolic Acid (CBG-A)	<0.090		
Cannabigerol (CBG)		0.08	0.755
Cannabidiol (CBD)		3.27	32.7
Tetrahydrocannabivarin (THCV)	<0.090		
Cannabinol (CBN)	<0.090		
Cannabichromene (CBC)		0.13	1.29
delta 9-Tetrahydrocannabinol (THC)		0.13	1.27
delta-9-Tetrahydrocannabinolic Acid (THC-A)	<0.090		
delta 8-Tetrahydrocannabinol	<0.090		
(6aR,9S)-delta-10-THC	<0.090		
(6aR,9R)-delta-10-THC	<0.090		
Cannabinoids Total		%	mg/mL
Max Active THC (delta-9-tetrahydrocannabinol)		0.13	1.27
Max Active CBD		3.28	32.79
T.Active Cannabinoids		3.61	36.10
Total Cannabinoids		3.63	36.30

Following USDA guidelines on uncertainty, Altitude Consulting's uncertainty is calculated to be +/- 2% for all cannabinoids using a coverage factor of 2 (95% confidence interval). Measurement uncertainty has not been factored into reported values.
Blank results indicate the compound was below the limit of detection.




Gary Brook - Laboratory Director - 7/21/2022

Reporting Limits will vary based on sample extraction weight used for the analysis.

The results of this report are based solely on the sample submitted and cannot be reproduced. Decision Rule: Measurement uncertainty is not accounted for in the reported values.

Results are based solely on calculated numbers. Altitude Consulting makes no Statements of conformity. **Pesticide, metal, and microbial analyses are subcontracted to ISO 17025 laboratories.**